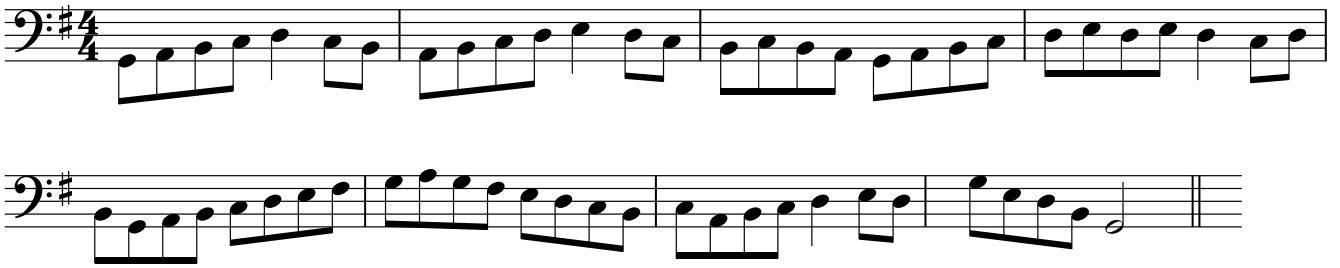


Διάφορα μπάσα

1



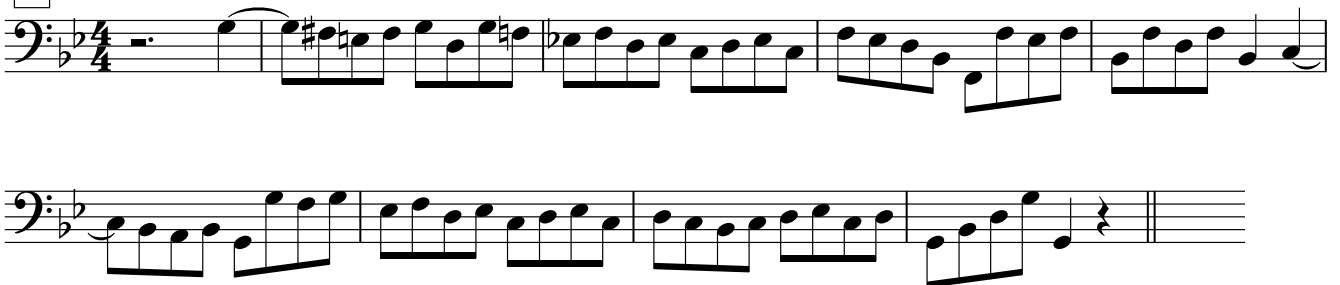
2



3



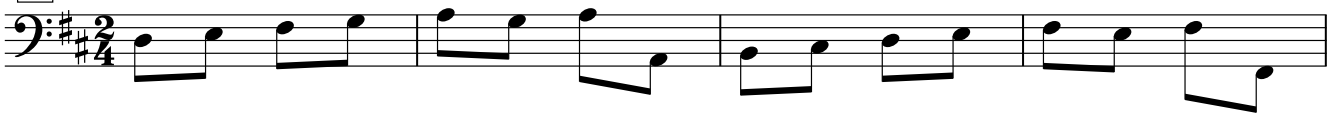
4



5



6



7



8



9

Exercise 9 consists of three staves of music in bass clef, key signature of two sharps (F# and C#), and 4/4 time signature. The first staff contains a melodic line with eighth and sixteenth notes, including slurs and a fermata. The second staff continues the melodic line with similar rhythmic patterns. The third staff provides a harmonic accompaniment with chords and single notes.

10

Exercise 10 consists of two staves of music in bass clef, key signature of two sharps (F# and C#), and 6/8 time signature. The first staff features a melodic line with eighth and sixteenth notes. The second staff provides a harmonic accompaniment with chords and single notes.

11

Exercise 11 consists of three staves of music in bass clef, key signature of two flats (Bb and Eb), and 3/4 time signature. The first staff contains a melodic line with eighth and sixteenth notes, including slurs and a fermata. The second and third staves provide a harmonic accompaniment with chords and single notes.

12

Exercise 12 consists of two staves of music in bass clef, key signature of two flats (Bb and Eb), and 4/4 time signature. The first staff starts with a whole rest followed by a melodic line with eighth and sixteenth notes. The second staff provides a harmonic accompaniment with chords and single notes.