

Μελωδίες

(Μετατροπίες σε συγγενικές κλίμακες)

Δημήτρης Ανδρώνης

1



5



2



3



2

4

Musical notation for exercise 4, measures 1-3. The first staff is in 2/4 time with a key signature of two flats (Bb, Eb). The second staff continues the melody. The third staff shows the final measure with a double bar line.

5

Musical notation for exercise 5, measures 1-3. The first staff is in common time (C) with a key signature of two sharps (F#, C#). The second staff continues the melody. The third staff shows the final measure with a double bar line.

6

Musical notation for exercise 6, measures 1-2. The first staff is in 3/4 time with a key signature of three flats (Bb, Eb, Ab). The second staff continues the melody. The piece ends with a double bar line.

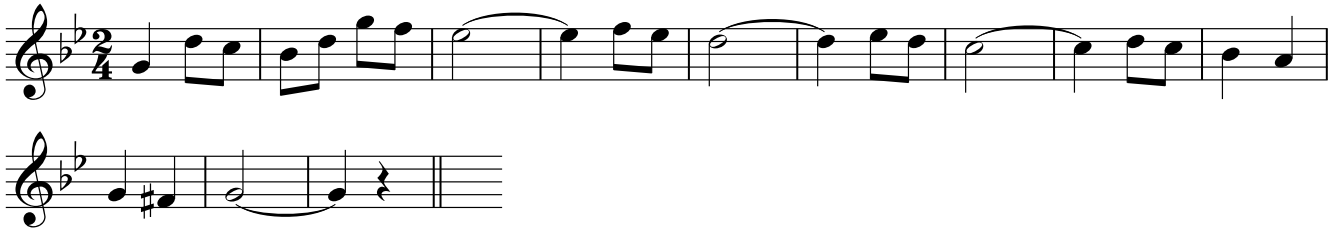
7

Musical notation for exercise 7, measures 1-2. The first staff is in 3/4 time with a key signature of one sharp (F#). The second staff continues the melody. The piece ends with a double bar line.

8

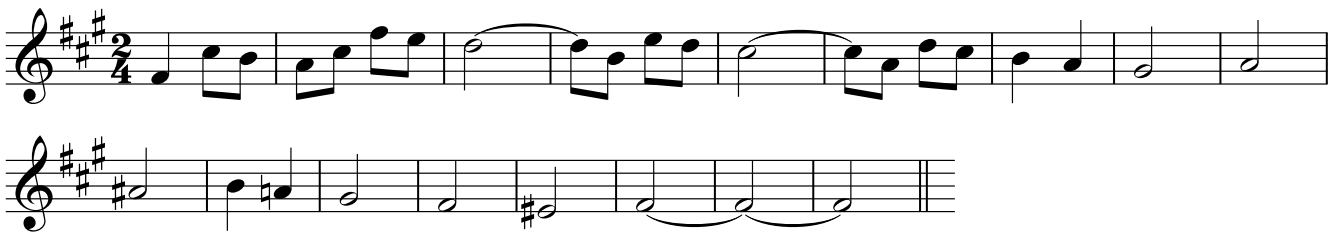


9



10

2014



11

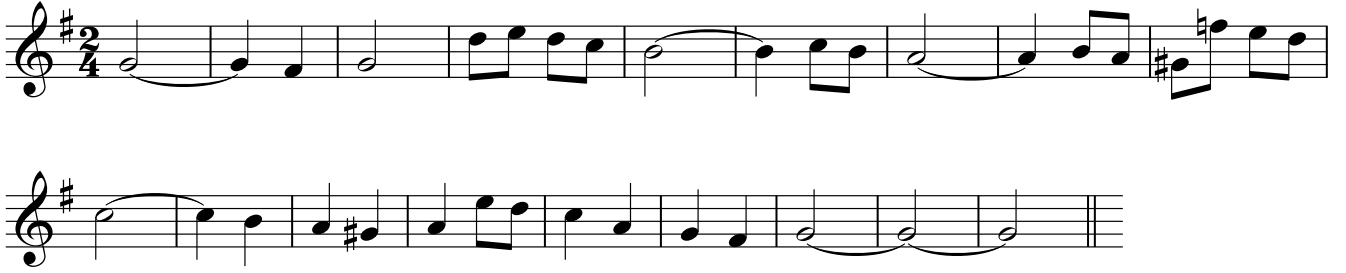


12



13

2006



14

2013 - Β προς Γ Ειδικό

Three staves of musical notation for exercise 14. The first staff is in treble clef, key of B minor (two flats), and 3/4 time. It contains a sequence of notes: B3 (quarter), C4 (quarter), D4 (quarter), E4 (quarter), F#4 (quarter), G4 (quarter), A4 (quarter), B4 (quarter), C5 (quarter), B4 (quarter), A4 (quarter), G4 (quarter), F#4 (quarter), E4 (quarter), D4 (quarter), C4 (half). The second staff continues the melody: B3 (quarter), C4 (quarter), D4 (quarter), E4 (quarter), F#4 (quarter), G4 (quarter), A4 (quarter), B4 (quarter), C5 (quarter), B4 (quarter), A4 (quarter), G4 (quarter), F#4 (quarter), E4 (quarter), D4 (quarter), C4 (half). The third staff continues the melody: B3 (quarter), C4 (quarter), D4 (quarter), E4 (quarter), F#4 (quarter), G4 (quarter), A4 (quarter), B4 (quarter), C5 (quarter), B4 (quarter), A4 (quarter), G4 (quarter), F#4 (quarter), E4 (quarter), D4 (quarter), C4 (half). The piece ends with a double bar line.