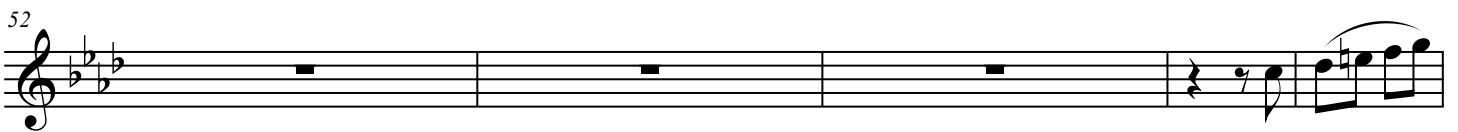
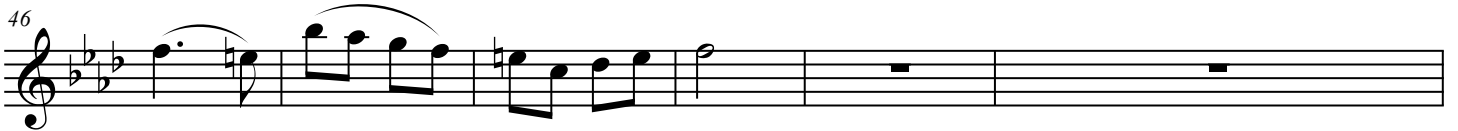
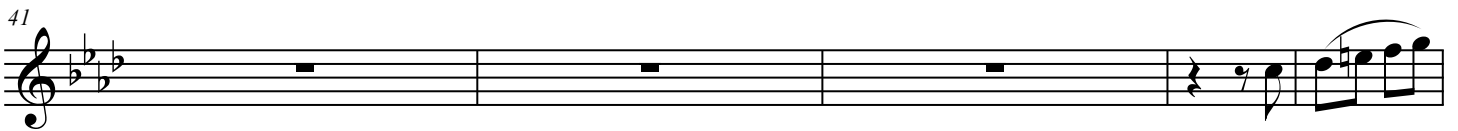
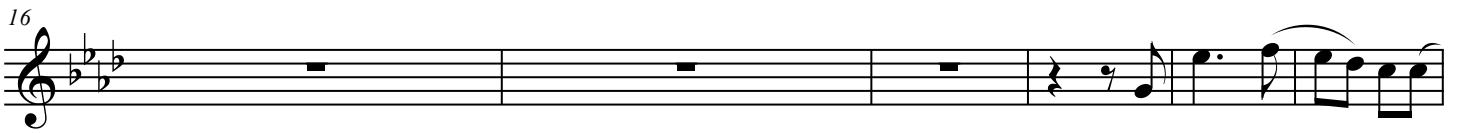
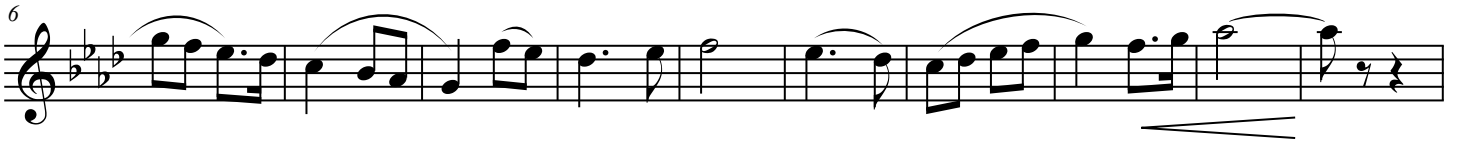
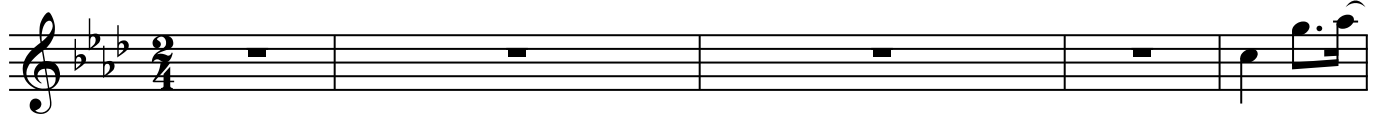


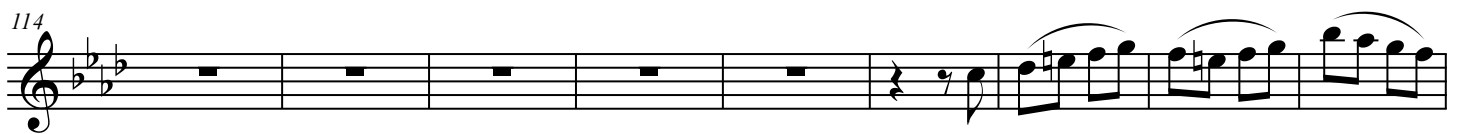
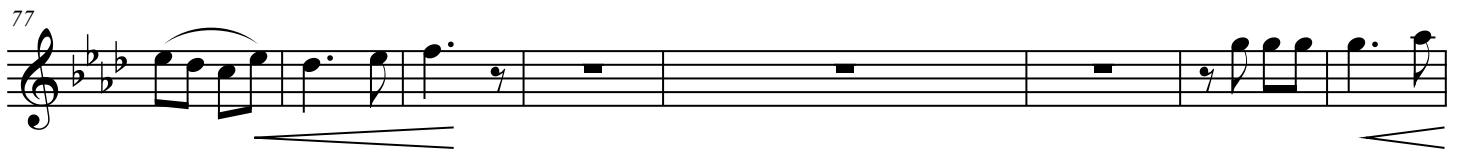
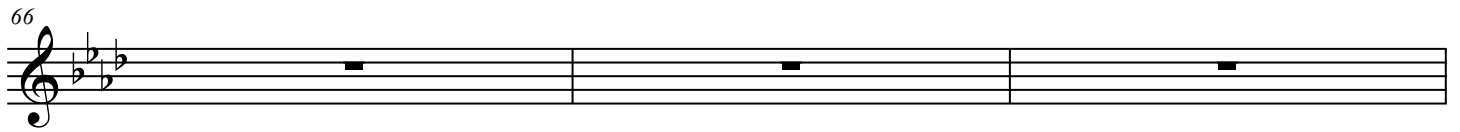
# εφοδος

Oboe

μουσική: Ν.Καριώτης  
ποίηση: Ν.Βρεττάκος

♩ = 108





123

A single staff of music in G minor (one flat). The melody begins with a half note G4, followed by a quarter note A4, and a quarter note Bb4. A slur covers the next two measures: a quarter note C5 and a quarter note Bb4. This is followed by a quarter rest, a quarter note A4, and a quarter note G4. The next measure contains a quarter note F4, a quarter note E4, and a quarter note D4. The final measure contains a quarter note C4, a quarter note B3, and a quarter note A3. The piece concludes with a double bar line. A hairpin symbol below the staff indicates a decrescendo starting from the final measure.